

DONN BREE



**RANCHES ▪ HOMES
LOTS ▪ LOANS**

800-371-6669

PROPERTY REPORT

ADDRESS: 00 Chariot Canyon Truck

DESCRIPTION: The Golden Chariot Mine was originally patented by gold miner George Valentine King during the original gold rush in the 1870's. It is the 2nd most productive in the Julian area. It is a wonderful piece of mining history and operated until 2002.

PRICE: \$3 ,000

APN: 292-160-02-00

MLS: 090046398

CONTACT: Donn Bree; Bree@Donn.com; 888-366-6273 cell; 800-371-6669 office.

Golden Chariot Mine, Julian Ca.



\$350,000

The Golden Chariot Mine was originally patented by gold miner George Valentine King during the original gold rush in the 1870's. It is the 2nd most productive in the Julian area. It is a wonderful piece of mining history and operated until 2002 when the Pines Fire claimed some of the outbuildings. The founding partner of Banner Mines Inc passed away in 2003 and other partners cannot continue to operate the mine.

Property includes 26 patented acres.

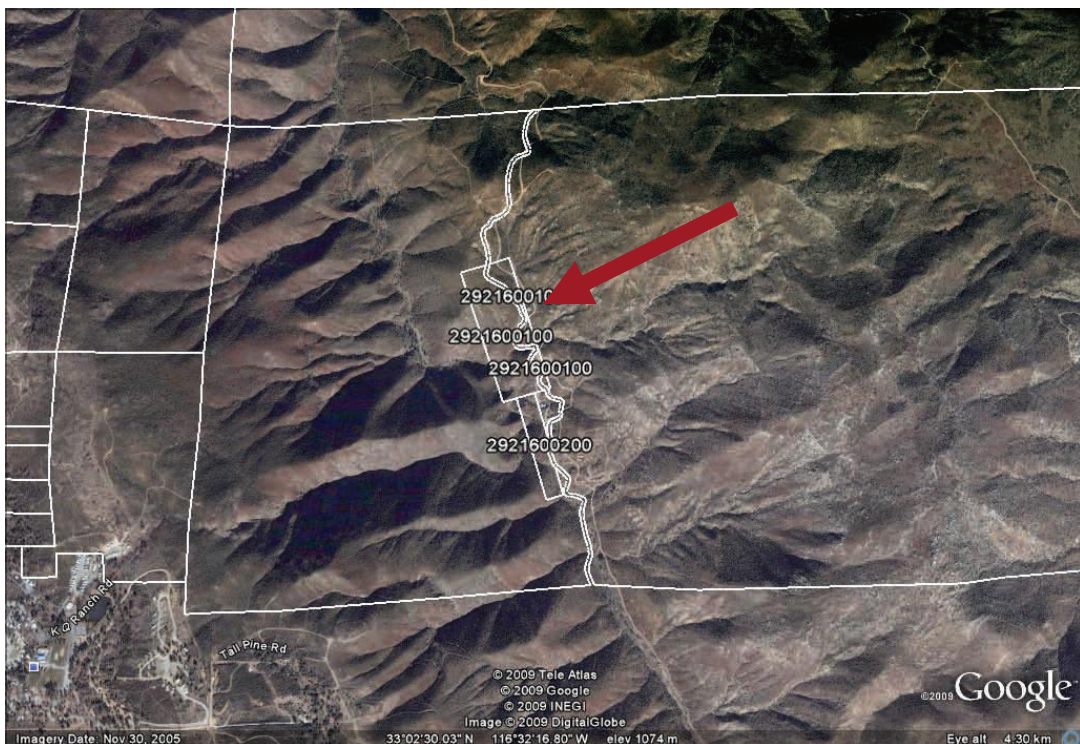
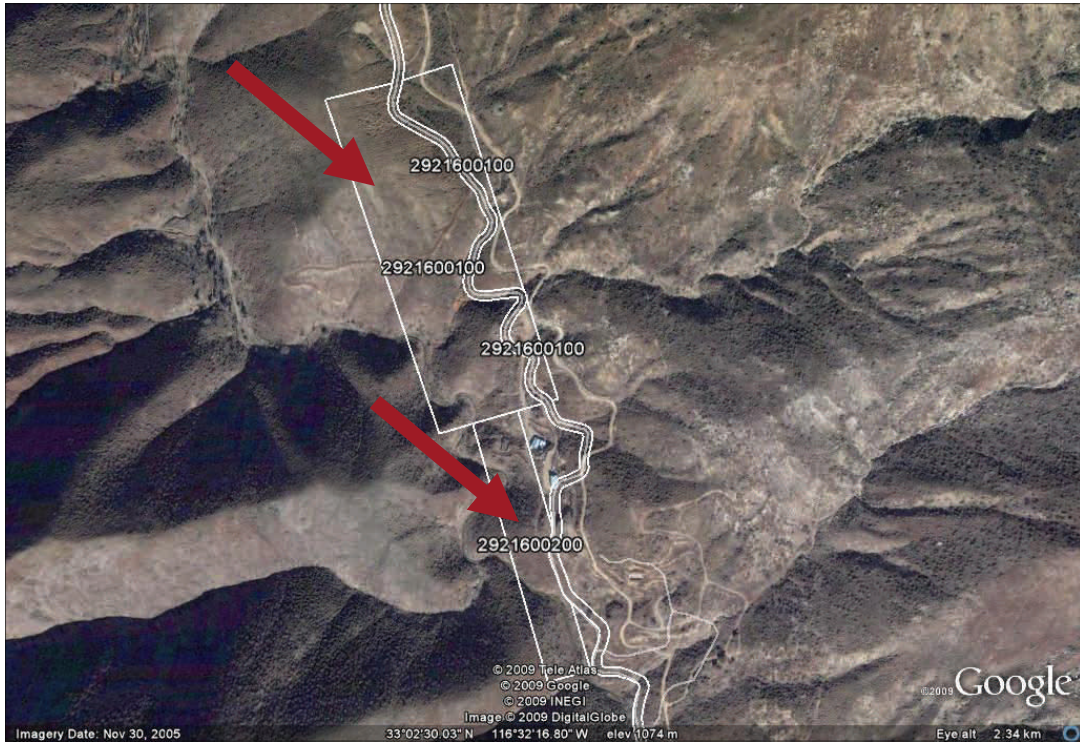
Building and equipment are included in sale.

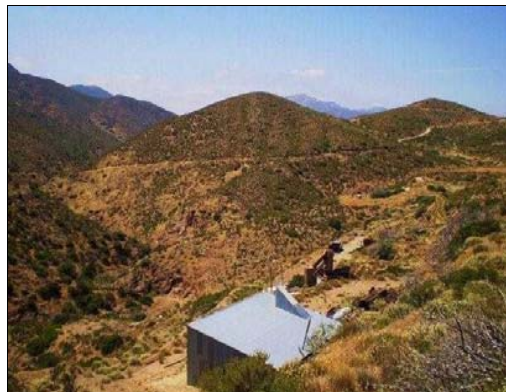


Donn Bree, Ph. D., G.R.I.
POB 188
Santa Ysabel, Ca. 92070
Donn@Donn.com
800-371-6669
CREB # 0109566



Assessor Parcel Number 292-160-02-00





Media: 9

Lot/Land Status: **Active**
 MLS #: **090046398** SP:
 APN: **292-160-02-00**
 Listing Type: **Exclusive Right (R)**
 Ownership: **Fee Simple**

LP: **\$3) \$,000**
 Orig.Price: **\$395,000**
 List Date: **08/14/2009** MT: **5**
 AMT: **4**

Address: **00 Chariot Canyon Truck**
 City: **Julian**
 Parcel Map #: **292**
 Tentative Parcel Map #:
 APN #2:
 APN #3:
 APN #4:
 Water District: **OUT**
 School District: **JULIANUNION**
 Age Restrictions: **N/K**
 Sign on Property: **Y**
 Lot Size: **20+ AC**

Zip: **92036** MapCode: **1156H3**
 Community: **JULIAN**
 Neighborhood: **Banner Grade**
 Complex/Park:
 Jurisdiction: **Unincorporated**
 Cross Streets: **Hwy 78**
 Zoning: **S92**

Acres: 26.00

REMARKS AND SHOWING INFO

The Golden Chariot Mine was originally patented by gold miner George Valentine King during the original gold rush in the 1870's. It is the 2nd most productive in the Julian area. It is a wonderful piece of mining history and operated until 2002 when the Pines Fire claimed some of the outbuildings. The founding partner of Banner Mines Inc passed away in 2003 and other partners cannot continue to operate the mine. Property, building and equipment are included in sale.

Directions to Property: **Hwy 78 through Julian to Banner Store; Rt. Chariot Canyon**

Mandatory Remarks: **None Known**

FEES, ASSESSMENTS AND TERMS

H.O. Fees: \$0	Paid:	HO Fees Include:
Other Fees: \$0	Paid:	Other Fees Type:
CFD/Mello Roos: \$0	Paid: N/K	

Total Monthly Fees: **\$0**
 Assessments: **N/K**

Terms: **Seller May Carry, Cash**

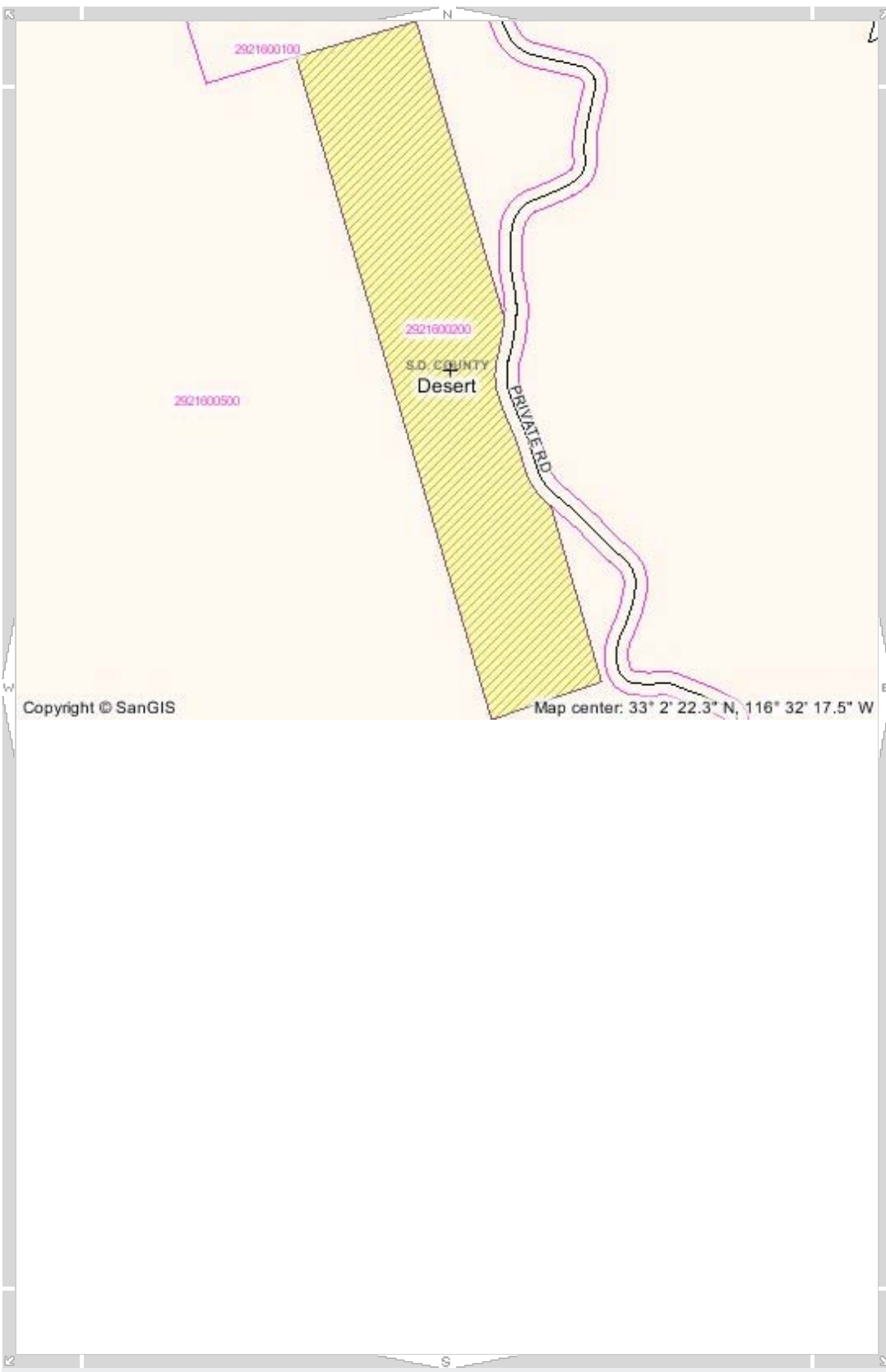
SUPPLEMENTAL REMARKS

The ground and water have been formally tested just last year and came back clear of toxins. There are numerous rich pockets and veins to be mined. The mine has a rich and colorful history - we hope this is just the property you're looking for!



Property Profile Map

Layers Legend Locate **Property Profile** Help



Parcel Profile Results

APN 292-160-02-00 Profile:

ZONING

Use Reg	S92
Animal Reg	W
Density	.125
Lot Size	8AC
Bldg Type	C
Max Floor Area	-
Floor Area Ratio	-
Height	G
Lot Coverage	-
Set Backs	D
Open Spaces	-
Special Regs	-
Regional Cat	RDA
General Plan	18
Plan Area	DESERT
Plan Group	-

GEOCODES

Elementary	GEN ELEM
School District	JULIAN UNION
High School District	HIGH JULIAN UNION
Local Park	PALOMAR-
Planning Area	JULIAN
Tax Rate Area	TAX RATE AREA 81001
Watershed	San Felipe Sub Unit

Scale: 1:

Map Tool: **Select Property**

S92 GENERAL RURAL USE REGULATIONS

2920 INTENT.

The provisions of Section 2920 through Section 2929, inclusive, shall be known as the S92 General Rural Use Regulations. The S92 Use Regulations are intended to provide appropriate controls for land which is: rugged terrain, watershed, dependent on ground water for a water supply, desert, susceptible to fires and erosion, or subject to other environmental constraints. Various applications of the S92 Use Regulations with appropriate development designators can create or protect areas suitable for low intensity recreational uses, residences on very large parcels, animal grazing, and other uses consistent with the intent of this Section.

(Added by Ord. 5508 (N.S.) adopted 5-16-79)

2922 PERMITTED USES.

The following use types are permitted by the S92 Use Regulations:

- a. Residential Use Types.
 - Family Residential
- b. Civic Use Types.
 - Essential Services
 - Fire Protection Services (see Section 6905)
 - Law Enforcement Services (see Section 6905)
- c. Agricultural Use Types.
 - Horticulture (All Types)
 - Tree Crops
 - Row and Field Crops
 - Packing and Processing: Limited

(Added by Ord. 5508 (N.S.) adopted 5-16-79)

(Amended by Ord. No. 6654 (N.S.) adopted 9-21-83)

(Amended by Ord. No. 6782 (N.S.) adopted 5-16-84)

(Amended by Ord. No. 7741 (N.S.) effective 3-28-90 (Urg. Ord.))

(Amended by Ord. No. 9101 (N.S.) adopted 12-8-99)

2923

2923 PERMITTED USES SUBJECT TO LIMITATIONS.

The following use types are permitted by the S92 Use Regulations subject to the applicable provisions of Section 2980. The number in quotes following the use type refers to the subsection of Section 2980 which applies.

a. Commercial Use Types.

Animal Sales and Services: Veterinary (Large Animals) "6"
Animal Sales and Services: Veterinary (Small Animals) "6"
Cottage Industries "17" (see Section 6920)
Recycling Collection Facility, Small or Large "2"
Recycling Processing Facility, Wood and Green Materials "3"

(Added by Ord. No. 5508 (N.S.) adopted 5-16-79)
(Amended by Ord. No. 5652 (N.S.) adopted 11-21-79)
(Amended by Ord. No. 5935 (N.S.) adopted 11-19-80)
(Amended by Ord. No. 6924 (N.S.) adopted 2-20-85)
(Amended by Ord. No. 8058 (N.S.) adopted 4-15-92)

2925 USES SUBJECT TO A MINOR USE PERMIT.

The following use types are permitted by the S92 Use Regulations upon issuance of a Minor Use Permit.

a. Residential Use Types.

Farm Labor Camps (See Section 6906); except that a Minor Use Permit shall not be required for a Farm Labor Camp for which a Use Permit is prohibited under Section 17021.5 or Section 17021.6 of the California Health and Safety Code.

b. Civic Use Types.

Minor Impact Utilities
Small Schools

(Added by Ord. No. 5508 (N.S.) adopted 5-16-79)
(Amended by Ord. No. 5935 (N.S.) adopted 11-19-80)
(Amended by Ord. No. 6654 (N.S.) adopted 9-21-83)
(Amended by Ord. No. 7741 (N.S.) effective 3-28-90 (Urg. Ord.))
(Amended by Ord. No. 7768 (N.S.) adopted 6-13-90)
(Amended by Ord. No. 7964 (N.S.) adopted 8-14-91)
(Amended by Ord. No. 8175 (N.S.) adopted 11-18-92)
(Amended by Ord. No. 8271 (N.S.) adopted 6-30-93)
(Amended by Ord. No. 9101 (N.S.) adopted 12-8-99)

2926 USES SUBJECT TO A MAJOR USE PERMIT.

The following use types are permitted by the S92 Use Regulations upon issuance of a Major Use Permit.

a. Residential Use Types.

Group Residential

b. Civic Use Types.

Administrative Services
 Ambulance Services
 Child Care Center
 Clinic Services
 Community Recreation
 Cultural Exhibits and Library Services
 Group Care
 Lodge, Fraternal and Civic Assembly
 Major Impact Services and Utilities
 Parking Services
 Postal Services
 Religious Assembly

c. Commercial Use Types.

Agricultural and Horticultural Sales (all types)
 Explosive Storage (see Section 6904)
 Participant Sports and Recreation: Outdoor
 Transient Habitation: Campground (see Section 6450)
 Transient Habitation: Resort (see Section 6400)

d. Agricultural Use Types.

Animal Waste Processing (see Section 6902)
 Packing and Processing: Winery
 Packing and Processing: General
 Packing and Processing: Support

e. Extractive Use Types.

Mining and Processing (see Section 6550)

(Added by Ord. No. 5508 (N.S.) adopted 5-16-79)
 (Amended by Ord. No. 6543 (N.S.) adopted 3-2-83)
 (Amended by Ord. No. 6761 (N.S.) adopted 4-25-84)
 (Amended by Ord. No. 6782 (N.S.) adopted 5-16-84)